

# Languedoc Artisans



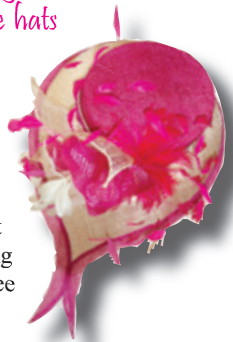
## Lucy Till, Milliner



*In the beautiful village of St Quentin la Poterie, near Uzès (Gard) you can find Lucy Till's studio and shop where she makes handmade hats for all occasions.*

Always keen on sewing, making clothes and teddy bears as a child, Lucy followed a hat making course at the London College of Fashion. She then went on to work for Herbert Johnson, London, before finally running

her own small business from home whilst she was starting a family. Bringing up three children meant that she wasn't able to do this for very long! When the family moved to France in 2002 however, Lucy brought all her machines and moulds in order to dedicate herself in earnest again to her passion for hats.



Lucy has orders during the winter months for flat caps, berets, etc. Then the requests for May and June weddings come in and this makes up the large majority of her work. She also caters for the need for summer straw hats, for people living here as well as the huge number of tourists passing through the Uzège area.

Her friends and family were amazed at her project of becoming a 'hatter' in the south of France but Lucy proved them all wrong when she had her first order on the first day she opened her shop! "It is true that fewer French people wear hats than in Britain for example" admits Lucy, "but French women are still keen on winter head ware and wearing a hat to a wedding is becoming more and more popular".

Although Lucy has made a few men's hats, these are very solidly built and more easily fabricated in larger hat makers' workshops. Sadly a great deal of these have closed down.

The Fashion industry has pushed forward the world of accessories with handbags and shoes. The only area left to develop is head ware and several designers are introducing hats into their collections. In Lucy's own words, "There is a hat for everyone". The secret is to choose the right size first; a hat that neither sits at the top of your head nor slips down, drowning your

face. Then it has to correspond to the shape of the face, the person's colourings and in the case of a wedding, their chosen outfit.

Lucy Till's hats will be on display at Ligne Roset outlets in Nîmes and Montpellier (see pg 17) throughout the month of April.

Lucy Till Hats, 12, rue de la Fontaine  
30700 St Quentin la Poterie  
Tel: 06 83 36 25 69  
Email: [lucytill.hats@pskt.com](mailto:lucytill.hats@pskt.com)



### Cookery Quiz



**Question:** What type of food is 'oreillettes'?

Reply before 13<sup>th</sup> April to [quiz@languedocsun.com](mailto:quiz@languedocsun.com)

The first 2 correct answers win a Logis de France cookery book.

Last issue's winners were Catherine Mompou, Nîmes and Simon Hodge, Montpellier.